

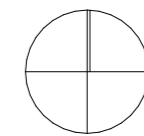


Übersicht Erdgeschoss




-  4-Zimmerwohnung
-  3-Zimmerwohnung
-  2-Zimmerwohnung
-  Fahrräder
-  Motorräder



N



Übersicht Obergeschoss 1

-  4-Zimmerwohnung
-  3-Zimmerwohnung
-  2-Zimmerwohnung

TOP 07
83,55 m²

TOP 06
49,60 m²

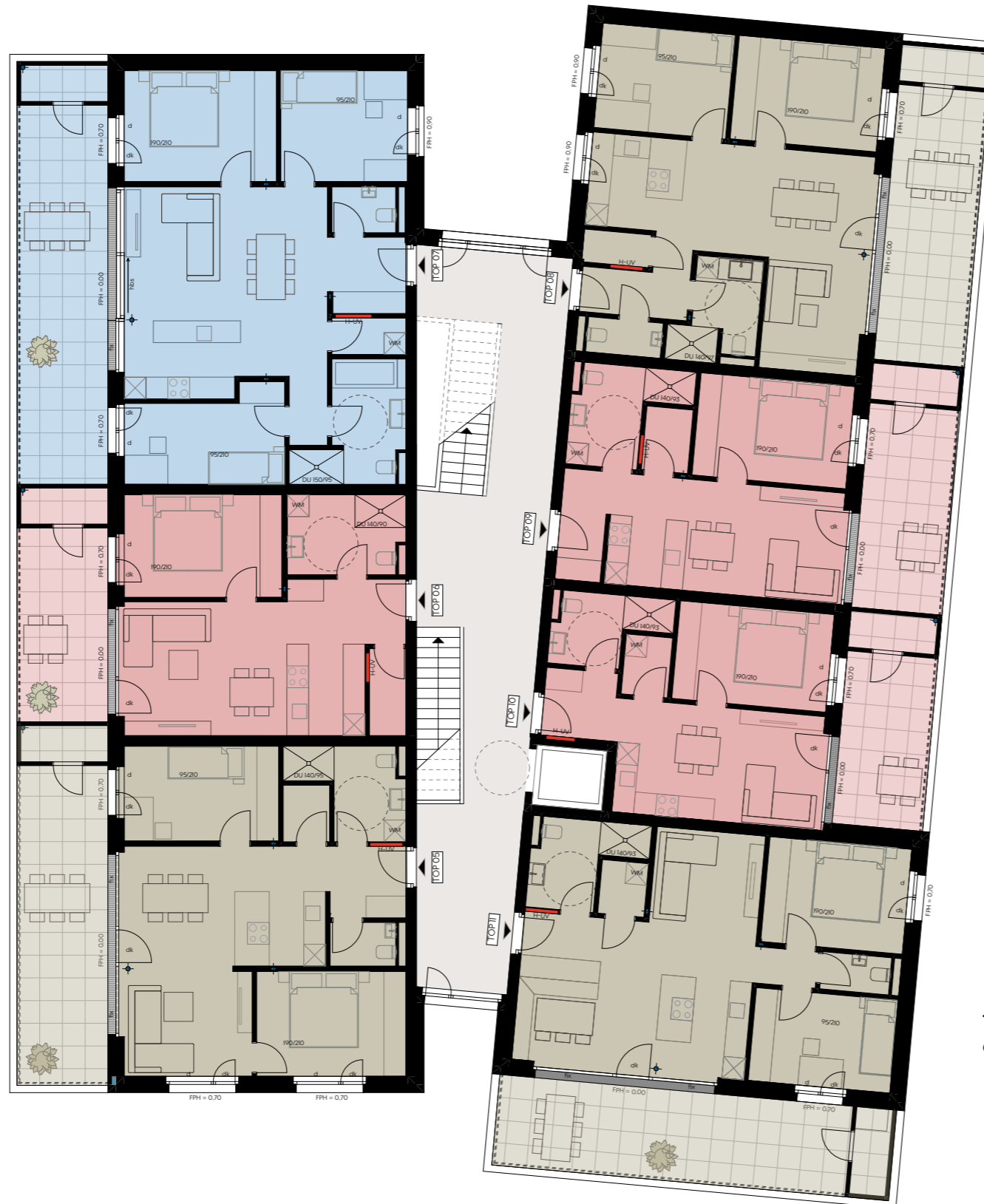
TOP 05
66,94 m²

TOP 08
66,99 m²

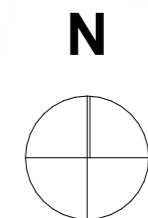
TOP 09
44,64 m²

TOP 10
40,46 m²

TOP 11
66,79 m²



L 60 Nofler Strasse



PRISMA 

Zentrum f. Standort- und
Regionalentwicklung GmbH
Hintere Achmühlerstrasse 1
6850, Dornbirn, AT
vorarlberg@prisma-zentrum.com
T +43 5572 22122

Übersicht Obergeschoss 2

- 4-Zimmerwohnung
- 3-Zimmerwohnung
- 2-Zimmerwohnung

TOP 14
83,55 m²

TOP 13
49,60 m²

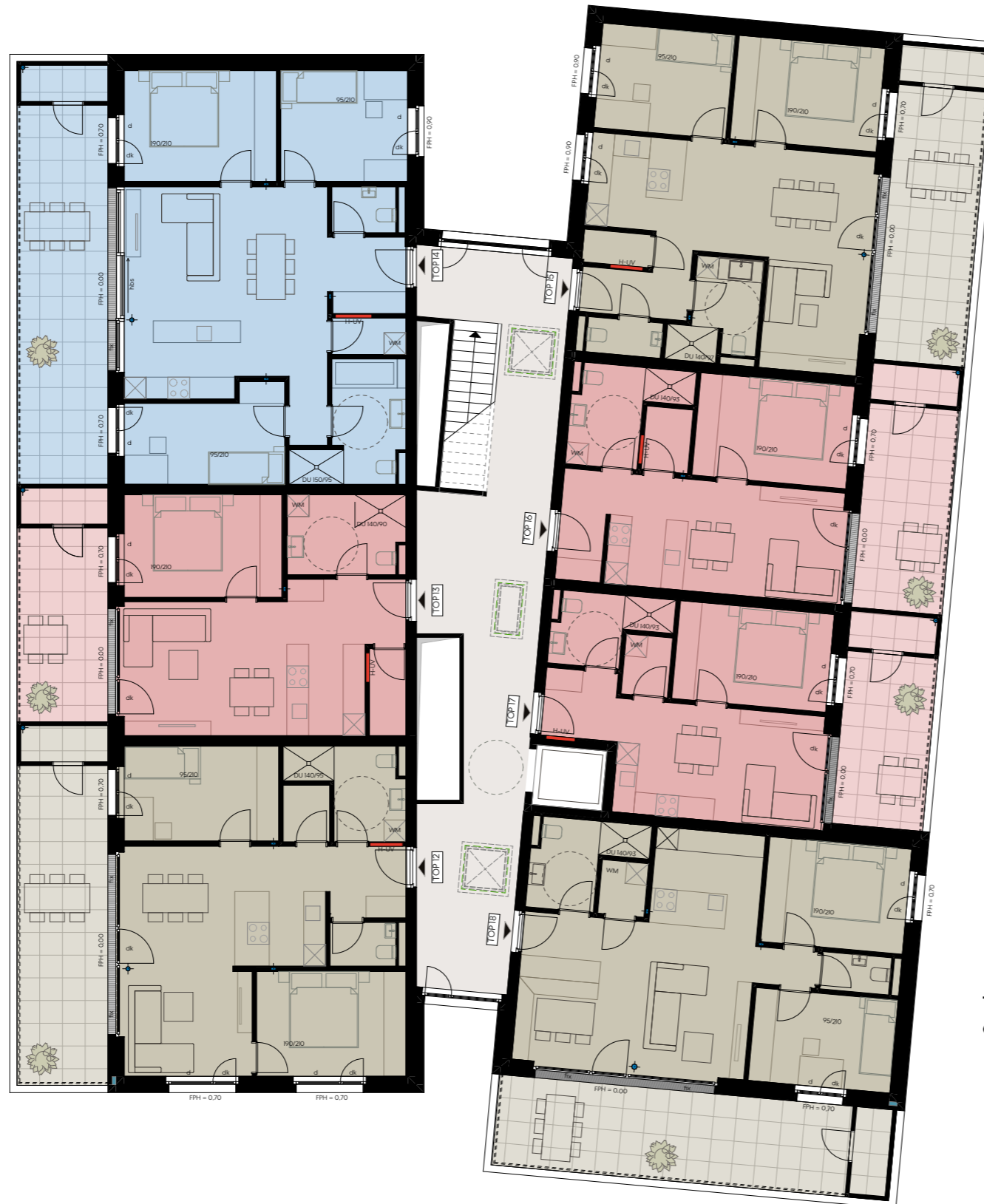
TOP 12
66,94 m²

TOP 15
66,99 m²

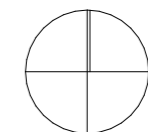
TOP 16
44,64 m²

TOP 17
40,46 m²

TOP 18
66,79 m²



N



L 60 Nofler Strasse

PRISMA

Zentrum f. Standort- und
Regionalentwicklung GmbH
Hintere Achmühlerstrasse 1
6850, Dornbirn, AT
vorarlberg@prisma-zentrum.com
T +43 5572 22122